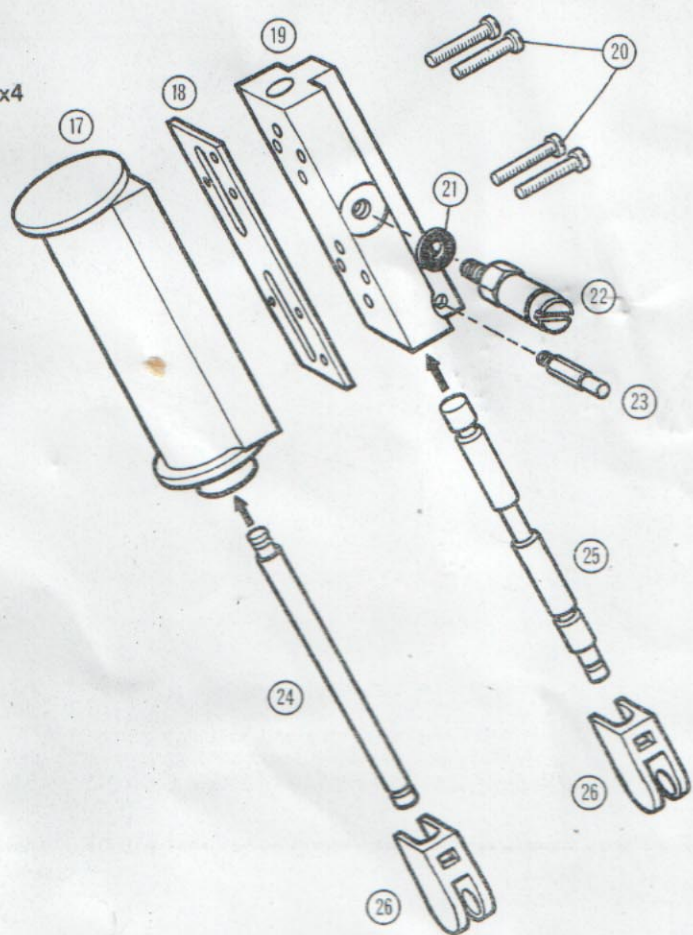


**3**

The right hand assembly is illustrated, the left hand being similar.

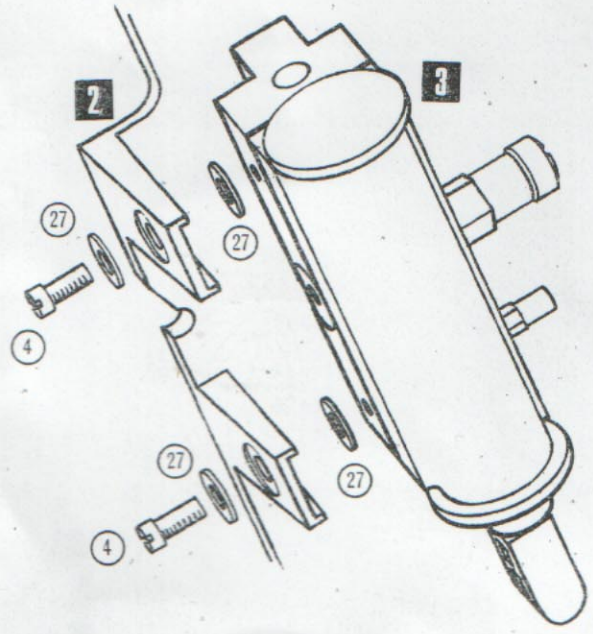
- 17
- 18
- 19
- 20
- 21
- 22
- 23
- 24
- 25
- 26



All x2

**4**

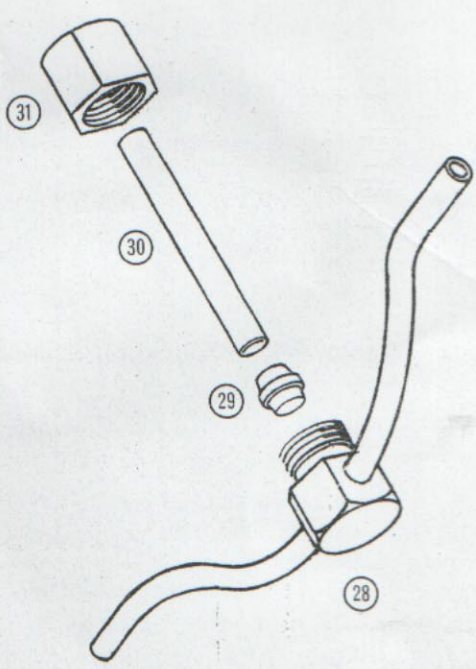
- 4
- 27
- 4
- 27
- 2
- 27
- 27
- 3



Place main assembly 2 on its left side and fit the right hand cylinder block assembly 3. Repeat for the other side.

**5**

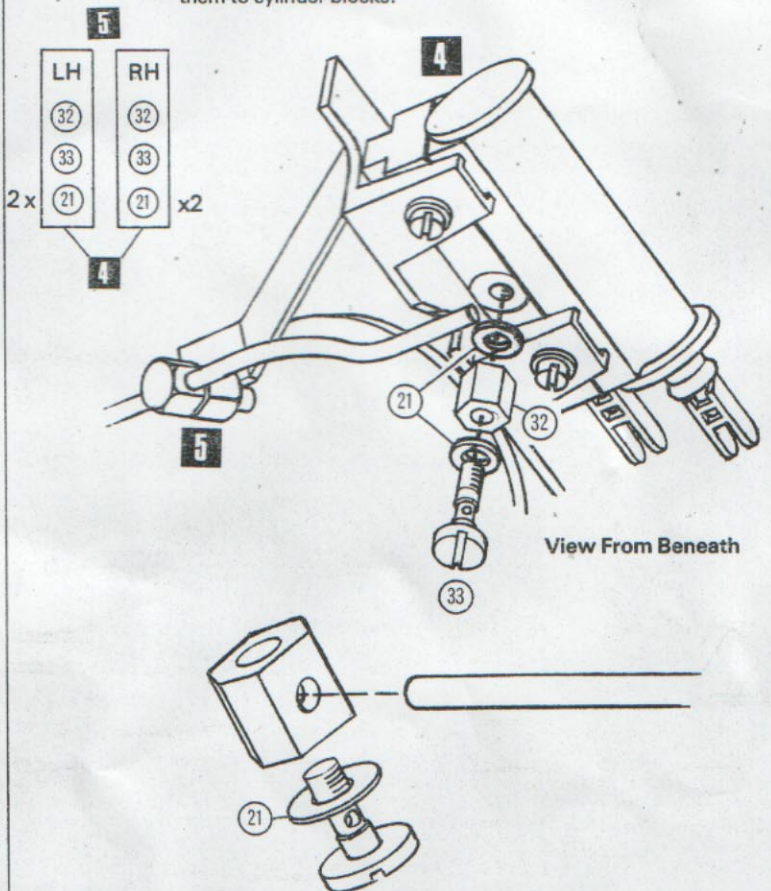
- 28
- 29
- 30
- 31



Fit olive (29) into 'T' piece (28), steam pipe (30) into olive then add gland nut (31) and tighten with  $\frac{3}{4}$ " spanner (or pliers) sufficiently to hold pipe (30) in position.

**6**

Stand 'Rocket' assembly, suitably supported, on its front end. Insert steampipe (part (30) of assembly 5) into hole in top of rear boiler plate. Fit 'banjo' nuts (32) to ends of preformed pipe (assembly 5) and use banjo screws (33) with washers (21) to fix them to cylinder blocks.



View From Beneath